

---

*West Midlands' N' Gauge Club*

---



---

# Newsletter

---



## FROM OUR CHAIRMAN

Once again, the club has been busy on the exhibition circuit locally (and perhaps not so locally). The month of May has been particularly busy. We have had two club layouts at shows: firstly, Dave Griffin and Jim Webster took our smallest layout, Gibben Quarry, to the Severn Valley event at Highley (clashing with our first May meeting) and then a fortnight later I took a team of Nigel Harrold, Rodney Hodge and Phil Hunt with Whartson Hall to the Lutterworth Railway Society Show.

Not only did we have club layouts at those events but also Phil Hunt, Nigel Harrold, Ken Jones (aided by Dave Evans) and Rodney and Christine Hodge were taking their personal layouts to Severn Valley, Syston and Railex Portsmouth respectively; Ken was also at Lutterworth. We are lucky in our small club to have so many regular exhibitors who spread N Gauge modelling and the name of our club around the area and sometimes further afield. Not only this but we have a loyal band of members who keep the club meetings ticking over smoothly (and without whom I could not have packed up Whartson Hall ready for Lutterworth).



On a different note, it is sad to see examples of clubs (of all sorts) that are having membership issues following Covid lockdowns. I think, as a club, we have fared very well and have come out of the situation very well both membership-wise and financially. Other organisations have seen membership, and hence revenue, drop off as a result of members not coming back for various reasons. I am aware of at least one club that is having to close as it cannot viably maintain its premises.

Continued.....

**T**he return of exhibitions, albeit sometimes in different venues, is to be applauded and we will support as many as we can. Attendance numbers seem to be at a good level at the shows that I have visited; traders and exhibitors are keen to be back. Some shows are being organised a bit ‘at the last minute’ as a result of uncertainties but they are going ahead nonetheless.

I can’t report any progress on my N Gauge project at present. It’s going through one of those quiet stages before I start to get some more woodwork done and get the back-scenes and ‘coffin boards’ prepared. The decision has been made as to how to proceed and once the backscene is in place I can start to look at some more scenery and also finish off some more parts of the control system.



**T**here are a few rumours going around that I have gone over to the ‘dark side’. I can confirm that I have purchased a 00 locomotive and a few wagons. Initially these are to run on a layout at another club and are not a sign that I am leaving N gauge. What I can say is that after lots of complaints about prices of new N locos, try buying the same thing, to the same level, in 00 and you will be surprised. The Dapol class 52 in N that I bought a few months ago cost less than the 00 class 16xx Pannier that I have just bought. I can say, however, that some of the second hand prices for wagons and coaches are a bit better.

**M**ay your soldering iron never get cold! Happy modelling. *Jeremy*



## NEWSLETTER DATES

Autumn: September 2022  
Winter: December 2022  
Spring: March 2023  
Summer: June 2023



Just a reminder to all Club members:  
to be included in the next Members' Contributions section, your article should be with me by  
**Thurs 22<sup>nd</sup> September 2022**, Volume 25 Issue 3 *will* be published on time and free to all. *Ed*

CHAIRMAN: Jeremy Edwards on 07720 902490



Treasurer: Edgar Mason  
Assisted by : Philip Hunt

Exhibition Co-ordinator: David Griffin  
[davejgriffin@outlook.com](mailto:davejgriffin@outlook.com)

Editor: Vince Painter  
[art1san1957@icloud.com](mailto:art1san1957@icloud.com)

WMNGC  
**27<sup>th</sup>**  
YEAR



### Scammers ALERT

There **ARE STILL** scams on **SOME ON LINE SHOPS** - whereby items are advertised at very attractive prices, but the seller **MAYBE** a scammer.  
After you have paid they order from a real supplier using your name and address but with stolen credit card details.

### PLEASE BEWARE

Remember the old motto: If it's too good to be true - it probably is!!



Her Majesty The Queen celebrated 70 years' on the throne this month, and I hope you all had a chance to join in, we did, outside on our front with the neighbours on the Saturday night - brrrrr!

GOD SAVE THE QUEEN

*Editorial*

On St George's Day, I visited Sutton Coldfield MRC 2022 Exhibition, with my better half (*I know how to give a girl a good time*). I didn't realise that we

should have taken crampons for the walk from the town centre to the church hall - we've recovered now, but at the time.....phew!

Whilst there, the Mayor officially opened the Exhibition.

An excellent report is available on 'Steamjammer'

<https://youtu.be/OHwNgdLScko>

Enjoy the read, Keeeeep Modelling and don't forget **TINGS** is just around the corner! VP



**SATURDAY 10<sup>th</sup> & SUNDAY 11<sup>th</sup>  
SEPTEMBER 2022**

**Saturday 10am – 5pm    Sunday 10am – 4pm**

**WARWICKSHIRE  
EVENT CENTRE**

**HOW TO FIND US**

The Visitor Entrance is off the A425 Southam Road. Please follow the signs directing you to the VISITOR ENTRANCE. Please use postcode **CV31 1FE**.

The Exhibitor Entrance is off the B4455 the Fosse Way. Please follow the signs directing you to the FOSSE WAY ENTRANCE. Please use postcode CV31 1XN.

There is no entry for visitors at the Fosse Way entrance, all visitors must enter the site from the Southam Road entrance off the A425.

**Exhibition Link Bus - SATURDAY ONLY**

Every 30 minutes from Leamington Spa Station to the Exhibition Centre. For the full timetable & prices see website.

**TICKETS**

ALL tickets MUST be purchased in advance at present via our website to guarantee entry to the show in 2022.

We hope to sell tickets on the day but this decision will not be made until 15th August 2022 pending any changes to the Covid-19 restrictions.

**TICKET PRICES**

**£11.00 Adult**  
**£10.50 Senior Citizen (65+ yrs)**  
**£5.50 Child (5-14)**

Meridienne Exhibitions cannot process any telephone bookings. If you have event specific enquiries, please call 01926 614101.

Meridienne Exhibitions Ltd will continue to monitor and act on advice from the Government.

Please make sure you visit our website for the latest information prior to your visit.

Meridienne Exhibitions LTD



**EVENT CENTRE  
WARWICKSHIRE**

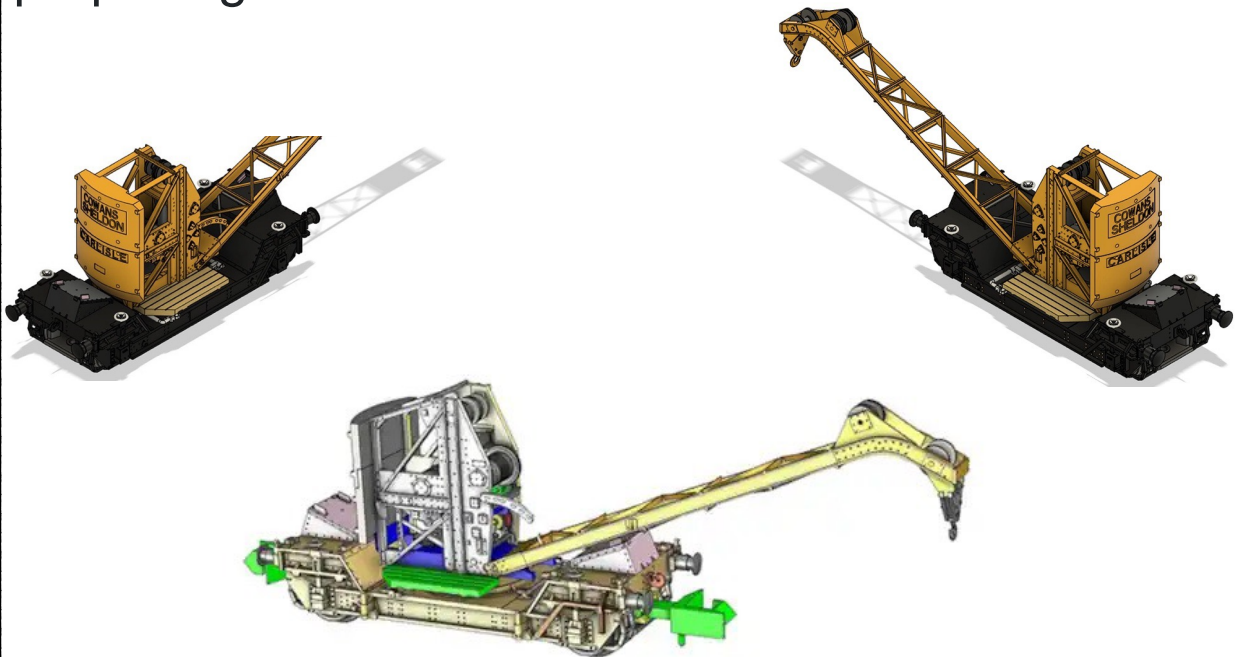
STOP PRESS NEWS FROM



<https://www.world-of-railways.co.uk/>

## Hand crane breaks cover for 'N'

The ***N Gauge Society*** is to produce Cowans Sheldon crane models of 6.5T and 10T variants, proposing 10 liveries.



<https://www.world-of-railways.co.uk/>

CLICK ABOVE FOR THE LATEST UPDATES

## MEMBERS' SUBMISSIONS

KEN JONES' Not so Little Bits

## COACH RESTORATION

This is a Langley Miniature models N gauge white metal kit of a Leyland Tiger TS7 coach from 1935. I recently acquired it second hand already built and painted with GWR transfers. I don't know if GWR owned such

vehicles but I like the model. There were some scratches to part of the roof so MBF / NGS member Malcolm Hall has done a great colour matching job for me making it look as good as when the modeller had finished it.



The kit is still available from Langley - their reference E12

*picture by Malcolm Hall*

2 years since I wrote the article about Eheim trolleybuses for the N gauge society and 2 years since Malcolm Hall and I decided to get something to work.

Here are video clips I took today following 2 attempts to make a board and further modifications yesterday while seeing Malcolm at his home in Grimsby. This uses original wire and poles sourced in the last 2 years

Getting this far has also involved help from **Ken Daniels** and **Peter Dale**

<https://www.flickr.com/photos/82409929@N08/52136354486/in/dateposted/>

<https://www.flickr.com/photos/82409929@N08/52136849780/in/photostream/>

*Ken*

*PS an excellent report on the Lutterworth 50th Anniversary Show is available at:*

<https://www.youtube.com/watch?v=MSeQVQ30GHA>

Two of my layouts, and the WM N' Gauge club "Whartson Hall" layout, were at the Lutterworth show - please press like and forward so, hopefully, Richard will produce some more video soon.

## Tipton Sub-Division PA

By Nigel Harrold

### 'SUGAR CREEK' MISSOURI

In my last Newsletter article I mentioned that my next project would be a small British 80's - 90's BR Blue era layout, well this is now on hold for, since becoming a member of the NMRA (National Model Railroad Association) and a member of the 'Black Diamonds' American railroad club, with some of the club members looking at constructing some bridging modules - so that 'Tipton Sub-Division' could be slotted in and to run trains through it within their module layout set up - but it was not feasible. With this in mind, and seeing how the module system worked, with ease of setting up and running, it was time to look at building a new American layout, using this system, so the layout could be run within any NMRA meeting, where modules from different clubs and members are all connected, to form a massive exhibition layout running hundreds of feet!

The layout can also run as a stand alone exhibition layout having a return loop either end into the fiddle yard at the rear. In the next Newsletter article I will show how these modules are constructed and connected to one another with the layout being designed to operate at various lengths - 12ft - 16ft or 20ft.

The layout is roughly based on the triple track **Transcon Railroad**, which runs adjacent to the Missouri River, passing the town of Sugar Creek. Just out of town is the cement works, situated in between the banks of the Missouri River and the railroad on Cement City Road. Material is bought in by barge and cement powder shipped out by truck or rail.

With a rough outline of what the new layout 'Sugar Creek' will be based on and constructed, I will leave it to the next Newsletter for progress and photo's.

*Going back to 'Tipton Sub-Division' I had a good show at the Severn Valley Railway 'Open Weekend' . The layout performing well over the weekend with the much needed and grateful help of **Iain Davis** who, through Facebook's Exhibition Forum, offered to help me over the weekend, also a thank you to **Phil Hunt** in helping to dismantle the layout on Sunday.*



*At Severn Valley with Iain Davis at the controls*

**W**arley will be the last show before TSD PA goes up for sale, that's if Sugar Creek is finished - fingers crossed.  
*NH*

*ARCHIVE IMAGES - and not so long ago - happy days!*



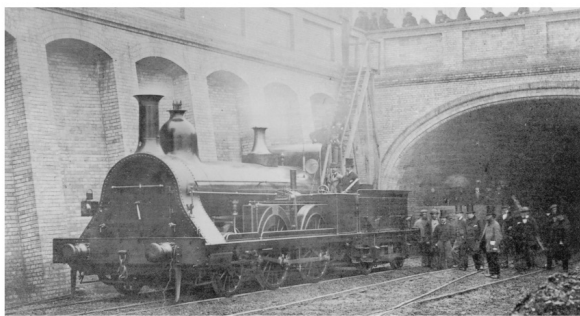


## Fowler's Ghost

This is just a little historical snippet about a failed experiment.

In 1861, for the Metropolitan Railway, John Fowler designed an innovative loco to try to deal with the issue of smoke and steam in the underground tunnels. The railway was the original underground railway and was sponsored by the Great Western Railway. The project was not a success and never reached operational use.

The locomotive was built to a 2-4-0 configuration. It was the first to use a condensing method for dealing with exhaust steam, used frequently and with success in later years. It was also 'fireless', using a traditional fire in stations where there was ventilation, to heat the water in the boiler but the rear part of the boiler was heated by firebrick which was used to provide steam in the tunnels. Again, this technology was later used with success when it had been developed further.



Like Brunel's Atmospheric Railway it was an 'idea before its time' defeated by a lack of material technology development.

*The only known picture of the loco taken at Edgware Road Station in 1862. The dome near the front of the loco shows how much of the boiler (about half) was heated by firebrick. The steam condensing pipes can be seen running down the side of the loco.*

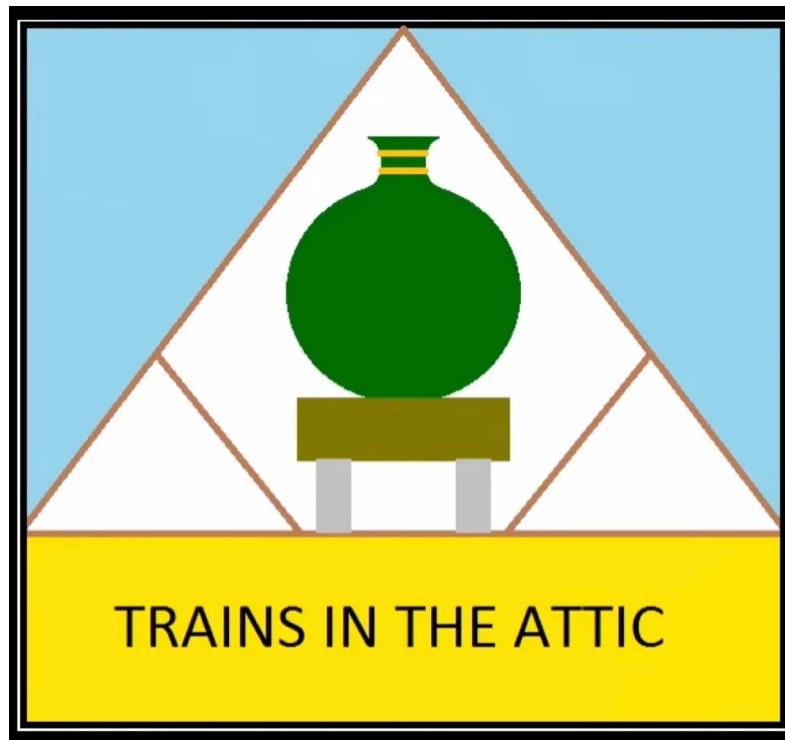
The locomotive was built, in secret, by Robert Stephenson and Company. Trials began on the Great Western mainline out of Paddington in great secrecy at night. This was an abject failure almost ending in tragic disaster. There is some confusion as to the absolute cause of the incident but the boiler feed pumps jammed, possibly due to leaks from the condensing system. If not treated correctly this would likely lead to a boiler explosion. The normal method of dealing with a water shortage in the boiler was to 'drop the fire' onto the tracks. With the ghost, this wasn't going to do much good as the firebricks were still hot. Apparently, disaster was avoided.

The locomotive went back to Stephensons for repair and modification. A second trial took place on the Metropolitan Railway near Kings Cross without disaster. It was not a success. Whilst the primary aim of removing smoke and steam from the tunnels was achieved, it also produced a very low level of steam and was not pursued further. After changing hands a few times, it was never used for anything purposeful as no-one could get it to work properly and it was scrapped. It was scrapped in 1895 by Beyer Peacock.

This appears to have been John Fowler's only failure as he was, in fact, a talented railway engineer. His greatest achievement was the design and construction of the Forth Railway Bridge.

This engine was brought to my attention in a YouTube video by Jago Hazzard. Jago's interests lie mainly with the London Underground network, its history and some of its quirks. His videos explain lots about disused or unused stations, lines etc. Information was also gleaned from Wikipedia (date details to back up information from the video). *Jeremy*

# SYSTON MODEL RAILWAY SHOW



<https://youtu.be/XrmRavbqXpE>



**Le Club 143**

Le Club 143 is one man's attempt to save French 1:143 rolling stock built by Rail Route in the 1960s. The company later adopted the name Majorette and dropped Rail Route and its railway products. The rolling stock is kept in what remains of a sunken / walled garden, and a line has been laid in the grounds, but the stock will never run as it was only designed to be pulled along with a track gauge of 12 mm. Rail Route never built any track. The advertisement is an original Rail Route poster and some of the rolling stock can also be seen in original packaging. The layout is built in a self-standing cutlery box which dates from at least 1935 as the original brass presentation plate has been kept. The layout was built in 2019 and measures 48 cm [19 in] x 33 cm [13in] and is free standing as its original use was also as an occasional table. The lock has been fixed, and a key made. Some of the cutlery box fittings have been used to make display shelves in the lid.

The house is a Kleiwe kit.  
The people are Noch and Woodland Scenics. The trees are from Busch and The Model Tree shop  
The swimming pool is a kit from Vollmer. The helicopter is from Japan 1:144 Heliborne Collection  
Cars have been supplied by Piers Milne and Dennis Fisher. The Isetta comes from toyaction.de and the Citroen HY Werkautswagen is produced by Minis [Lamke Collection GmbH]  
As 1:143 rolling stock was only ever intended as a pull a long train the owner has created an N gauge layout running in his grounds where he uses a German, American or English tank engine to pull his two Iberren coaches.

**PLEASE DO NOT TOUCH THE LAYOUT**

## EXHIBITION DATES

Here's the latest update:

Dates taken directly from emails to the editor, for which I thank you all *Ed*.

### ***From Rodney & Christine Hodge***

"We have another later on in the year but not yet confirmed".

### ***From Ken Jones***

Sat / Sun 10th / 11th Sept TINGS *Seen Better Days*

Sat Oct 1st Telford *Jones of Taunton*

Sat 15th October Wombourne *Le Club 143*

Sat 29th October Birmingham *Jones of Taunton*

### ***Philip Hunt - with Greenwood Railway***

*And Potentially*

Birmingham Show October (took details after Cradley Heath)

Shoeburyness November -?; Was invited down but Covid stopped last two years so might be on the calendar for next year TBC

### ***Tony & Jane***

October 29th 2022 Birmingham exhibition at Castle Bromwich with *Arley* Station.

### ***Nigel Harrold***

Up to now I have *Tipton Sub-Division PA* booked for the 6 remaining shows I've listed below:

August 20th - Craven Arms M.R.C at Ludlow Racecourse

August 27th - Bourneville

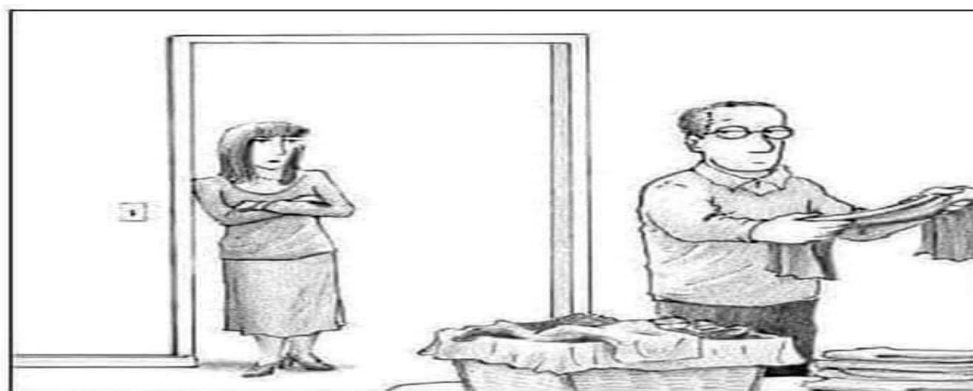
September 17th - Trent Valley

September 24th & 25th - Stafford Show

October 8th - Cradley Heath.

November 27th & 28th - Warley Show.

***Keep an eye out for 2023 - members please update me for Issue 3.***



**"Ok, last night you washed dishes, today you are folding laundry. You bought more trains, didn't you?"**

## OTHER SCALES

A Page dedicated to guest-scaled articles:

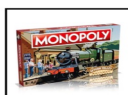
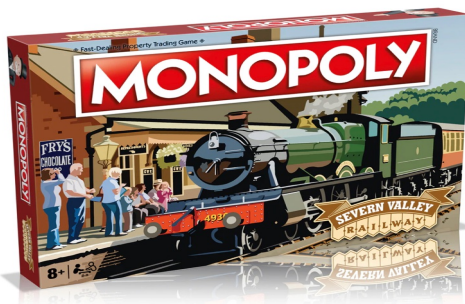
*WHILST CHECKING MY EMAIL SUBSCRIPTIONS - I CAME ACROSS:*

**BIG NEWS** as Peco reveals new TT track range, they are to launch a range of 1:120 scale model railway track and accessories.



And from 1:1

What a great idea ! Hope Father Christmas is reading...



### Severn Valley Railway Monopoly

£45.00

Tax included.

Quantity

1

PRE-ORDER NOW

✓ Pickup available at **Kidderminster Town Station Emporium**

Usually ready in 2-4 days

[View store information](#)

Buy, sell, dream and **steam** your way to riches with the Severn Valley Railway Monopoly game.

Make your way around the board, collecting some of the SVR's most iconic attractions, including the mighty Victoria Bridge, The Engine House Visitor Centre or the beautiful Hampton Loade.

# COMPETITION PAGES

Here we go again, boys and girls, WORD-SEARCH No.25/2/1

Print off this page, then find the RESORTS THEMED words listed below, in the puzzle - good luck and enjoy your Summer holidays before the next Newsletter.

- ABERYSTWYTH
- BARMOUTH
- BLACKPOOL
- BRIGHTON
- GREAT YARMOUTH
- MORECAMBE
- PORTSMOUTH
- RHYL
- SCARBOROUGH
- SKEGNESS
- SOUTHEND
- TORQUAY
- WESTON
- WHITBY

R X V T Y Q X S Y K Y C M S Y X  
 N Q B L A C K P O O L M J O B L  
 H T Y W T S Y R E B A M I U T D  
 Y I T Y R T Z H E I N Z L T I L  
 T N K L O I F I F N K T Y H H S  
 T Y H P A L V D O U W Y I E W K  
 H U I Z L T R T A O I A I N B E  
 T H T U O M S T R O P U I D R G  
 U E T B I E Z X N I H Q Q D I N  
 O R G Q W J L J O W C R M U G E  
 M O G R E A T Y A R M O U T H S  
 R A W H O Z M Z H X Z T A X T S  
 A D F L Y M D A I R L O T B O L  
 B Z V L Q J B X Y W N M W D N F  
 H G U O R O B R A C S R S U G W  
 F C M O R E C A M B E S C X S Z

Here's a WORD PUZZLE for you to pass those days between Club Meetings!

How many words of 4 or more letters can you make out of:

**“TIPTON METHODIST” ?**

SO, PRINT OFF THIS PAGE and use the area below for your answers:

## Joke of the day

*What do points make? - prizes! - DAVID ALEXANDER*

unknown AUTHOR (I know - it gets worse)

## Previous COMPETITION

within minutes of publication this correct answer came from:

DAVID ALEXANDER from Dry Drayton, Cambridge, who says:

“I recently moved house to the edge of Cambridge for work, so I don't really qualify as West Midlands any more. That means I'm starting from scratch with layout building, I had to tear up the one I had worked on for 16 years. On the bright side, I have a garden big enough for my own Gauge One garden track. I have split loyalties - Gauge one in summer and N gauge in winter”.

*“Schools Class 30938 St Olaves was at Tattenham Corner station in 1959 because it hauled the Royal Train there so HM the Queen (gawd bless 'er) could attend the Derby at Epsom races, for which it is the nearest station”.*



**Royal Train arriving at Tattenham Corner station on Derby Day.**

*Taken on 3 June 1959*

View southward, towards Purley and London; ex-SE&CR Purley - Tattenham Corner branch.

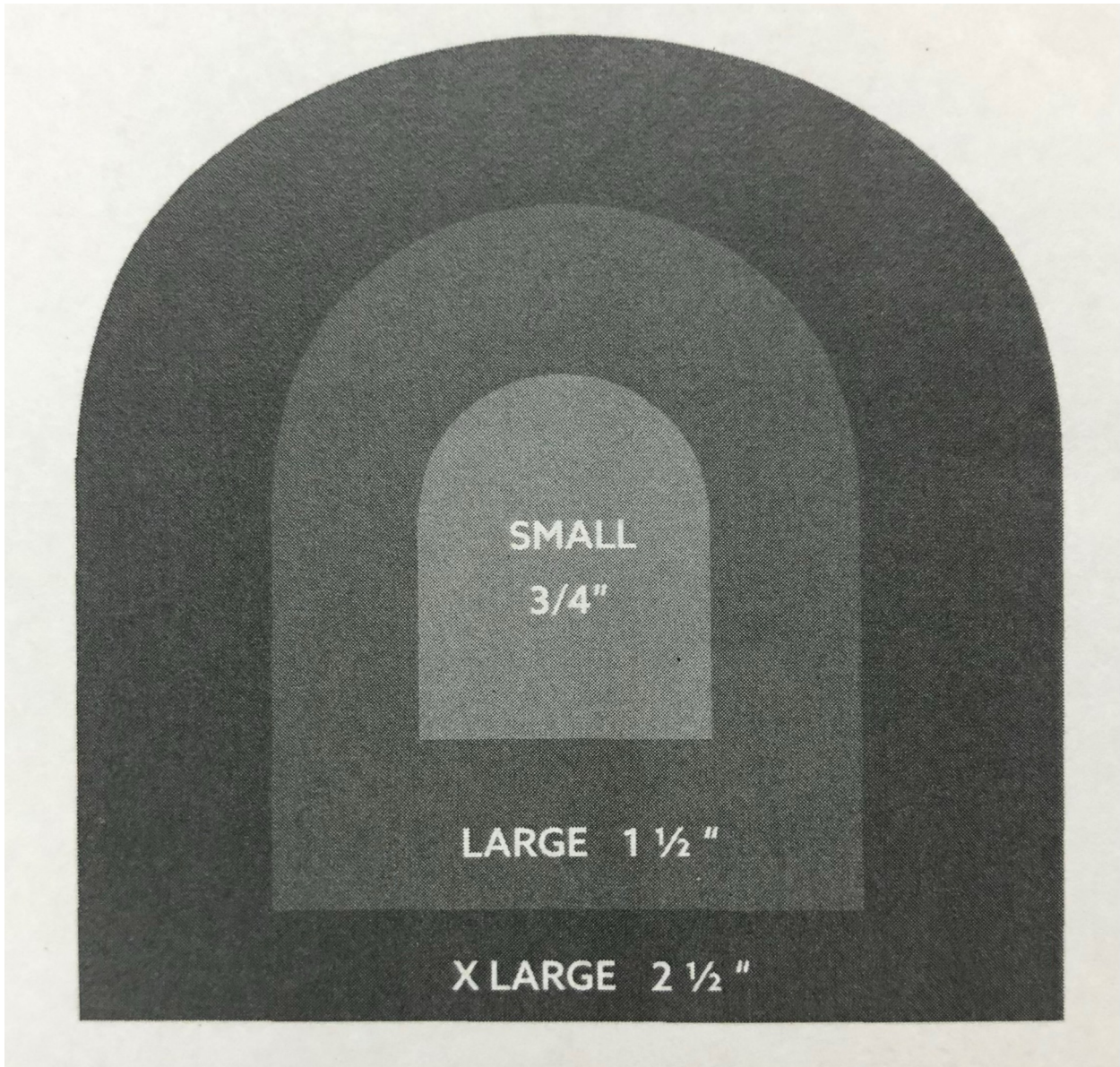
The Station is all prepared for HM the Queen to attend the primary horse-race of the year.

Her Pullman train is hauled by a resplendent SR Maunsell class V 'Schools' 4-4-0 (with Lemaitre double-chimney) No. 30938 'St Olaves (*built July 1935, withdrawn July 1961*).

*Note the headcode and the Stationmaster guiding the driver to the exact stopping point.*

NEW COMPETITION

Continuing on from our last What on Earth?



There may be light at the end of this, but is it really what you think?

Answers on a postcard, as ever, if you've never heard of a postcard, I suppose you'll have to email me at:

[art1san1957@icloud.com](mailto:art1san1957@icloud.com)

*Select 'compose email' after clicking on the above link.....*

# SUPPLIERS

# OXFORD



<https://www.oxforddiecast.co.uk/collections/1-148>

An example page from their web site.....

**SEARCH FASTER**  
Filter Products

---

Refine By Clear All

AVAILABILITY: FUTURE ×

BRAND: OXFORD DIECAST ×

---

▼ AVAILABILITY Clear

IN STOCK (284)

OUT OF STOCK (76)

FUTURE (8)

---

▼ BRAND Clear

OXFORD DIECAST (8)

---

▼ BY SCALE Clear

1:148 (8)

---

▼ BY MAKE & MANUFACTURER Clear

FORD (2)

## 1:148 Scale Model Cars and Vehicles form Oxford Diecast




The scale of 1:148 is referred to as N and 148 times smaller than the real thing. This is the second most popular scale in the UK for railway layouts. Oxford Diecast has become the worlds biggest producer at what is also known as British N Scale. Although model vehicles were produced at this size in the past, Oxford Diecast were the first company in the world to take it so seriously. The first releases appeared in 2008 and what followed was an intensive release programme with new items appearing at regular intervals.

Not only for collectors, but also for gifts and all at an affordable price.

**Read Less**

Sorting Date, new to old ▼

Show 24 36 **48** View as ☰ ☰

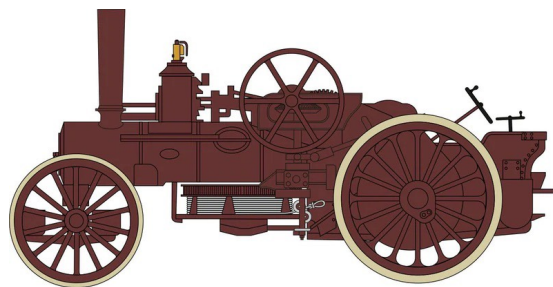
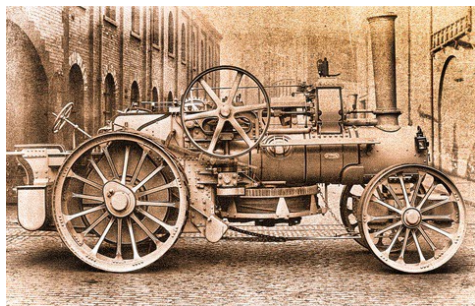
		
<p>Oxford Diecast Sealing Wax Red/beige Grey VW T1 Samba Bus</p> <p>Product code: NVWS001</p> <p>☆☆☆☆☆</p> <p>£5.95</p> <p><span style="background-color: #e67e22; color: white; padding: 2px 5px;">More info</span> <span style="background-color: #34495e; color: white; padding: 2px 5px;">Future</span></p>	<p>Oxford Diecast Tweed Grey-OEW Classic Mini</p> <p>Product code: NMN009</p> <p>☆☆☆☆☆</p> <p>£4.95</p> <p><span style="background-color: #e67e22; color: white; padding: 2px 5px;">More info</span> <span style="background-color: #34495e; color: white; padding: 2px 5px;">Future</span></p>	<p>Oxford Diecast Pickfords Living Wagon</p> <p>Product code: NLW002</p> <p>☆☆☆☆☆</p> <p>£8.45</p> <p><span style="background-color: #e67e22; color: white; padding: 2px 5px;">More info</span> <span style="background-color: #34495e; color: white; padding: 2px 5px;">Future</span></p>

*New release (but not yet in stock at Hattons at time of writing):*

*Thanks to KJ for the update*

**Oxford Diecast 15145 Rusty Fowler BB1 Ploughing Engine**

**Product Code: NFBB001**





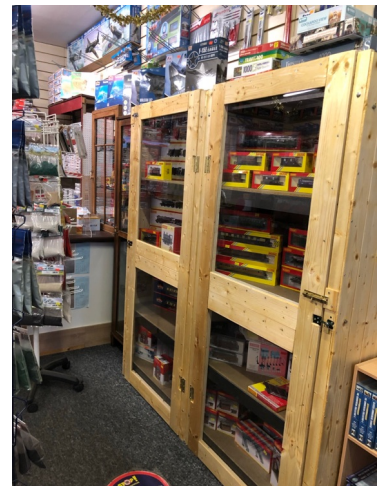
## MODEL SHOPS

Come and see Ritchie in his well stocked shop in BLOXWICH.  
Yes there's loads of N' Scale, as well as tools, glues and paints, and  
**loads of free parking 20 yards away.**

<https://www.scalemates.com/shops/shop.php?id=2941>

go on! click the link above for **address details and opening hours**, it's a really friendly shop, all current precautionary advice, and more, is being adhered to - you can mention Vince's name on entry and you'll be welcomed heartily.

*(must remember to copy newsletter to Ritchie - note to self Ed).*



# ONLINE REPORT

With the Club going from strength to strength on the Exhibition Circuit, let's continue to spread the word and keep our fantastic hobby in the public eye...

Social Media: STAR FACEBOOK PAGE

Just type in **West Midlands N Gauge Club**

*(Our very own Facebook page - get on it, get friending, come on let's make this the viable partner to our fantastic Newsletter)*

## EXTRACT FROM AN ACTUAL PAGE IN May 2022



Nigel and Phil look on whilst Rodney was having a nap underneath **Whartson Hall** at Lutterworth's 50th Anniversary Show 2022.

The following may be of special interest to members - click below for a great ONLINE article from Ken J.

<https://www.focustransport.org/2022/05/bluebell-railway-ken-jones.html>



ONLINE REPORT - continued

From **N Gauge for Beginners**' Facebook page:



Thank you Jeremy for spotting these on another railway related Facebook site.



Look out for more in future Issues of this world famous WMNGC Newsletter! *Ed*

## RETURN JOURNEY

*Otherwise known as any other business & raisins to be cheerful 1,2,3.....*

1. It is our Club's 27th year, and we're open in renewed premises (well, we moved into the more ergonomically spaced room next door).
2. Walsall Football Club have been taken over by Trivela Group LLC, based in Birmingham (Alabama) - UTS.
3. We all have a passion, some have two, or three, but when does passion become fanaticism? Is it at three guitars!?



Yes the third, and final, instrument has arrived - more fine tuning is needed on this Cherry Red, semi hollow, 2019 Epiphone ES339 Pro (*other guitar models are available*), but that's part of the 'fun'. It keeps me off the streets and occupies me during the daily mindful downtime.

It would be remiss of me not to show you my latest prized possession - sorry it's not another loco, but I have too many of those already!

Want to share *your* latest passion? email me. *Ed*

*PS It's rumoured the editor and his predecessor will be in attendance on the second August meeting - internal influences notwithstanding - see you there!*

## EDITORIAL IDEAS BOX

If all else fails, we still have our friendly, little Club - dedicated to all things N' Scale, but **mostly** trains and railway related stuff - not forgetting the cakes of course!

Just a reminder that **anytime is the right time** if you have *any* modelling related memories, images or anecdotes you would like to **share with our readers**, then email me at: [art1san1957@icloud.com](mailto:art1san1957@icloud.com)

*Please note that any recommended suppliers, ideas or suggestions found in this not-for-profit, and totally free newsletter, are for readers' personal use only, any inaccuracies are regretted and not deemed to be life-threatening.*

### CREDITS

All images in this issue are submitted, in the main, by the author of each article, any copying, scanning or pasting etc, etc, blah, blah, are at your own risk - GDPR apply.

Special Thanks to the following Club Members for their articles:  
Everyone on our Facebook pages and Jeremy Edwards, Nigel Harrold & Ken Jones.  
Also, to our Chairman for his unceasing attention to detail.



Edited Using Pages app  
on Apple iPad Pro 2019 running iOS for iPad v15.5  
(*other devices, apps & operating systems are available - apparently*)Ed





## NOTICEBOARD INFORMATION

Meetings will be(or were) as follows, and are always held at:

Tipton Green Methodist Church Hall  
Park Lane West  
TIPTON  
West Midlands  
DY4 8LD

### WMNGC MEETING DATES in 2022

Saturday 8<sup>th</sup> and 22<sup>nd</sup> January (new dates due to 1<sup>st</sup> Jan being a Sat)  
Saturday 5<sup>th</sup> and 19<sup>th</sup> February  
Saturday 5<sup>th</sup> and 19<sup>th</sup> March  
Saturday 2<sup>nd</sup> and 16<sup>th</sup> April  
Saturday 7<sup>th</sup> and 21<sup>st</sup> May  
Saturday 4<sup>th</sup> and 18<sup>th</sup> June  
Saturday 2<sup>nd</sup> and 16<sup>th</sup> July  
Saturday 6<sup>th</sup> and 20<sup>th</sup> August  
Saturday 3<sup>rd</sup> and 17<sup>th</sup> September  
Saturday 1<sup>st</sup> and 15<sup>th</sup> October  
Saturday 5<sup>th</sup> and 19<sup>th</sup> November  
Saturday 3<sup>rd</sup> December (including AGM)

*For more N' Scale information and a host of other interesting topics*

Visit our Club Website <http://www.wmngaugeclub.co.uk/>

Facebook search West Midlands N Gauge Club

**BE HAPPY AND KIND TO OTHERS**

**Meetings will be held under local guidelines, in consultation with our hosts.  
Any changes will appear in our Newsletters, with emails/post & calls for urgent info.**