

---

*West Midlands' N' Gauge Club*


---



# Newsletter



## FROM OUR CHAIRMAN

**A**s I start my second year as chairman, it is an exciting time for the West Midlands N Gauge Club and I must own up that it is not from anything specific that I have done, so I am taking no credit.

I suppose the most exciting news is that we have been given a new and much improved room by our landlords (Tipton Green Methodist Church). I know Vince has some pictures squirrelled away so I will leave it to him to sort those out. Upstairs in the Church Hall there were three rooms; we had the long and narrow one as it was the only room available that would take Waterstock and leave space to move around it. There was a large and more 'square' room that the club was initially offered but it was too short for Waterstock.



There was also a small office which the church no longer used so, by combining the two, there is now a room that really suits our requirements.

**Waterstock** now runs along the long wall of the new L-shaped room with plenty of room to access it. We now also have space for our other three layouts to be permanently erected and we have had meetings where all four layouts are in use.

We have additional space which we are currently working on. The first two meetings of the year were used to transfer the layouts between rooms and get them properly set up, checked and running.

Whilst I suspect we can't avoid still needing the stock room, David Griffin and I have been systematically going through what we have in there and deciding what to keep and what is rubbish.



We are steadily picking up bookings to take layouts to shows, currently mainly in the autumn. We have **Tipton Hills** at *TINGS* 2022 and **Whartson Hall** at the *NEC* in particular. What is refreshing is that we are being contacted if a show has had a layout drop out so our reputation amongst the organisers is good. I hope that this can continue although it can put a strain on the pool of members who are able to help to operate layouts. Not only are we picking up a good stream of invitations, we are being well represented by members who are taking their own layouts to shows.

**O**n top of this, there is interest in developing another layout. This project would be a dedicated DCC layout which could be used with an analogue controller. We have a growing interest in the digital side of things and some expertise within the club from members. From a personal point of view, if I had been starting from zero when I joined the club, digital control would have been my preference however I had so much really early stock that conversion would have been a bit of a nightmare however, as you may read later, I've taken on aspects of DCC construction in my own layout.

I am looking forward to an exciting year with the club.

Jeremy



# NEWSLETTER DATES



Summer: June 2022  
Autumn: September 2022  
Winter: December 2022  
Spring: March 2023

Just a reminder to all Club members:  
to be included in the next Members' Contributions section, your article should be with me by  
**Thurs 9th June 2022**, Volume 25 Issue 2 *will* be published on time and on budget *Ed*.

CHAIRMAN: Jeremy Edwards on 07720 902490



Treasurer: Edgar Mason  
Assisted by : Philip Hunt

Exhibition Co-ordinator: David Griffin  
[davejgriffin@outlook.com](mailto:davejgriffin@outlook.com)

Editor: Vince Painter  
[art1san1957@icloud.com](mailto:art1san1957@icloud.com)

WMNGC  
**27<sup>th</sup>**  
YEAR



## Scammers ALERT

There ARE scams on SOME ON LINE SHOPS - whereby items are advertised at very attractive prices, but the seller **MAYBE** a scammer.  
After you have paid they order from a real supplier using your name and address but with stolen credit card details.  
**BEWARE , ESPECIALLY AT THIS Worrying TIME**  
Either way, the scammer gets your money.  
So be very wary of deals that seem **TOO CHEAP** - they may not exist.

**Remember the old motto: If it's too good to be true - it probably is!!**



*Her Majesty The Queen celebrates 70 years on the throne, and I hope you'll all join me in raising a glass to her later in the year.*

**GOD SAVE THE QUEEN**

# *E*ditorial

As you can see from the images in the Chairman's article, the Club has settled in to its bigger space - I managed to visit in time to help out with the electrics on **Waterstock**. I've heard it is fully running now.



During my attendance I also managed to give my *Western Pullman* a runout



on **Whartson Hall**, seen here about to overtake my *Class 55 "Prince Of Wales's Own Regiment Of Yorkshire"*.

I really hope to be able to visit on a more regular basis, when I could even give any potential successor some training in the fine art of editing this wonderful publication.

Are there any volunteers? No, I hear you say - carry on Vince! - I love doing it really - but there will come a time.

Thank you to all contributors, and future ones who may be thinking of sending articles (*DO IT NOW*), but first - have a great read, don't forget the puzzle and competition pages and support your local model shop! - Keeeeeeeeep MODELLING. VP



## CANNOT BUY ONE

By Ken Daniels

**A**s Christmas was fast approaching I decided to buy myself a new train - which one, was an easy decision, *The New Measurement Train* was it.

Whilst running it in, my thoughts turned to extra vehicles, sadly there are none available as ready to run units. Although there are plenty of used coaches available at sensible prices. After acquiring these I completed a repaint using the nearest colour match available.



Sorry Ken, I couldn't resist finding a picture of a maintenance train, I know, not the same, but it begins with M - (HO Kibri Kit ) Ed

**T**hen the somewhat trying process of adding the required logos etc.

Having searched the Internet I recalled the name of *Rail Tech Transfers*. (No connection) - After a very short look, hooray just what I needed. I contacted them and two days later the transfers arrived, super stuff.

***Why not try a conversion, it is well worth it.***

***Also, here is a cleaning tip*** - many rail modellers have the problem of dirty points, my solution is simply a toothbrush and ISO cleaning fluid. (Okay everyone says oh yea tried it) but newcomers to our hobby may need encouragement and help.

*Ken D.*

## MEMBERS' SUBMISSIONS

KEN JONES' Not so Little Bits

### *Jones Of Taunton*

As expected we've moved into our new premises before the end of the month, but still lot's to finish. Our two town buses have been out testing the new dedicated roadway on this new industrial estate, and we have not started on our smaller unit which will be our overflow yard.

This layout made it's debut at the Wombourne show 2022.



It's my first layout without a moving train. Instead it uses the Tomytec Moving bus system plus commercial N gauge buses and coaches repainted by Malcolm Hall as part of the static display in the company yard or on nearby roads. Some of the coaches were away at the paint shop and were not ready in time for Wombourne, but I hope this will still generate interest.

### *The Fleet*

- 1 converted Chinese model possibly Yutong coach
- 2 converted Tomix railbus coach
- 3 converted Matchbox # 5 open top bus part of heritage fleet
- 4 repainted Tomytec moving bus system single decker for town service
- 5 repainted Tomytec moving bus system single decker for town service
- 6 repainted Tomytec moving bus system single decker at paint shop
- 7 repainted Tomytec moving bus system coach for continental services
- 8 repainted Oxford Diecast Plaxton Panorama coach
- 9 repainted Cars Workshop Daimler Fleetline double decker for schools service
- 10 repainted Matchbox Bedford SB coach part of heritage fleet
- 11 repainted Oxford Diecast Scania Irizar coach at paint shop
- 12 repainted Oxford Diecast Plaxton Elite coach at paint shop
- 13 repainted BT Models Duple Dominant coach at paint shop
- 14 repainted crew bus people carrier at paint shop.

*Ken*

## Layout Progress – March update

*New Street* By *Jeremy Edwards*

Since the last newsletter item, about my current project ‘New Street’, quite a lot of progress has been made however there is one limiting factor – finance. This is meant to be a low budget project however the standards I wish to set technically are quite high; this has resulted in some features being delayed or temporarily compromised whilst others are probably ahead of schedule.

A quick recap on specification might help to see where temporary compromises have been made. It is a 2400mm by 900mm layout with a scenic depth of about 600mm (that’s about 23 inches). Track is Peco Code 80; control is by Gaugemaster controllers using a variation of a DCC bus system. The track layout is a double track continuous run with a station and a junction to a single track branch.



The baseboards, Grainge and Hodder kits, were assembled by early May and a track layout planned full size on the boards. Progress from there was very slow; I had ‘other fish to fry’ and also track was hard to get.

Track-laying started in August although I was still sourcing track as and when I could, although medium radius points remained an issue for a while.

Once I got to this stage, things did start to take off and progress recently has been quite quick and interesting although, as mentioned earlier, some temporary compromises have been made.

In the last week I have been able to connect the boards up on the trestles that will be the normal support. Up until now the boards had been assembled on the dining table – which happens to be large (and quite valuable). This has enabled me to get all around the layout to work on it and to test run trains.

It has been invaluable as I have been trouble shooting with track and wiring and it's much easier. So, at this stage the track is fully laid and hopefully now trouble free; the power



wiring is in place and the control panel has been constructed and tested. In order to ballast the station area, I have installed the platforms and, at the time of writing I have ballasted the scenic track on one board (I need more PVA which I will get shortly).

I am happy with the electrical situation for track power. I have the ability to use three controllers (one pair are part of a Gaugemaster double and I have a single). The control panel is another Grainge and Hodder product and only houses the controllers and three rotary switches to connect the power buses to allocated controllers.

These are connected to the power buses with 5 amp cable and 4mm plugs and sockets. There are 4 buses (common return and one for each section). Each power bus runs to a switch which allocates a controller so that I can, if I need to, run the whole layout from one controller. The points are set up for DCC operation so they do not have any insulating ability - to overcome this some sections have isolators which, eventually will be relays but currently, are switches.

This works well and an interesting trick I have used is to put scrap track under the baseboard to act as a part of the 'bus system'.



Continued....

One reason for using the system outlined above is that by putting the isolator switches (and eventually relays) on panels on the board that they are used on reduces the number of wires between boards. Currently there are just four and they have individual 4mm plugs and sockets. The number of wires will increase to six when I add point control too. The system functions well and enables complex moves from branch to main and reverse while holding trains on the main lines.

The original scenic space, as outlined in paragraph 2, seems to offer little space for town modelling so I am currently planning version two. This impinges on the individual point and isolation control panels so the isolator switches are currently mounted in the rear corner of each baseboard. I'm looking at having a town scene mounted over the fiddle yard with access from the rear and a removable top. As I'm still unsure of how well that would work it's very much a possible plan.



In retrospect, I wish I had been able to make the layout about 12 feet long but there just isn't anywhere at home that I could set it up and access the whole thing.

The storage sidings are a bit short and the platforms limit stopping trains to about four coaches. I do have an idea for a longer layout but it wouldn't have a continuous run; during lockdown I didn't have a continuous run facility to keep my locos from getting tight.

The next main step is to source plywood; this would enable me to make a storage 'coffin' system and also to set up the backscene and control panels. I also need to figure out the best way of having a set of control switches on the front of the layout for 'watching trains go by' at home.

*JE*

## STOP PRESS NEWS FROM WOMBOURNE 2022

### Jones of Taunton – The picnic table top layout

(On the day of its first public appearance)

The model is more of a fictitious large diorama with working N gauge buses rather than a railway layout. A siding on a once large area of former railway land is still owned by a preservation group, as is the gate keeper's cottage and former engine shed. The rest of the former railway land is being turned into a new, small industrial estate.

In allowing the development of the site, the council refused to have the pillbox removed.

The layout is built directly onto a picnic table and measures 31" x 23" and utilises the Tomeytec Moving Bus System. I have had so much interest about the Tomeytec Moving Bus System on my layout "*Salverton*", which was built on a tray, that I have decided to build a bigger Moving Bus System and make it the home for the coach company "*Jones of Taunton*".

Prior to June 2021 "*Jones of Taunton*" had 3 vehicles, two modern coaches and one open top vintage bus, all painted and modified for me by my friend Malcolm Hall. I had already contemplated expanding this fleet and had discussed other possible vehicles with Malcolm. The opportunity arose for the company to move to new premises on the industrial estate built on the former railway land.



In June 2021 I bought two lots of second-hand Moving Bus roadway and decided some of my existing Tomeytec vehicles would join the fleet of "*Jones of Taunton*". Malcolm Hall repainted them for me as well as painting other coaches we acquired and a school's service double decker.

Note – Taunton did have large railway yards including engineering and concrete production. These were on the East side of the town and later demolished and turned into housing. The layout and coach company are all fictitious.

3 other coaches are with Malcolm Hall for repainting - Everything else is second hand – and....

*it is not yet finished!*

# Tipton Sub-Division PA

By Nigel Harrold



It's been a while since I have managed to pen an article for the newsletter concerning 'Tipton Sub'. The layout was completed in time for its debut at TINGS in the September, things went really well with only two issues - first issue a set of points for the cross over from track 1 to track 2 and second issue the operator (Me) messing up the routing of trains.



At TINGS with Phil at the controls

The second issue was sorted out on the Sunday, with Phil Hunt helping me with running the layout (everything seems to run so smoothly when Phil's there).

*Continued...*

The cross over points was replaced before the next shows where it ran with no problems at Telford and Wombourne, with the help of Phil, and the Birmingham Show with the help of Jeremy (I think he is slowly turning DCC, Ha, Ha).



With the Stafford Show now being moved to September and the layouts first show not until April, this has given me a few weeks to set the layout up a couple of times to check thing out and also make a start on my other little project which will feature in another article.

**O**n Saturday 19th February I paid a visit to '**Black Diamonds**' Model Railroad Club, who meet in Kegworth village hall. They just run American N Scale and Ho Scale module layouts, with four of the N scale layout storage tracks holding trains measuring up to 16ft long. I also got to run some of my stock this is after getting my head around the Digitrax DCC wifi system they use. Being my first visit they have now made me a member which will be good for me because I will be able to learn a lot more about using and running DCC.

They then got to talking about making some connecting boards so that my layout can be joined within the module system they use at shows and exhibitions.



*Continued...*

**A**nybody running, or thinking about running American, I would recommend you pay the 'Black Diamonds' a visit.



Here are a couple more shots of their N Gauge Modular Layout.

Continued....

### *Tipton Sub Division PA Forthcoming Exhibitions in 2022*



April 23rd & 24th - Americana Show at Mech Models, Burton-on-Trent.

May 7th & 8th - SVR Open Weekend.

August 27th - Bourneville

September 24th & 25th - Stafford Show

October 8th - Cradley Heath

November 27th & 28th - Warley Show.

*Look out for more updates in the next Issue.*

NH



## THE QUARRY - With Bill & Ben

By Rodney & Christine Hodge

Report from north of the border:

As far as the **Model Rail Scotland** show was concerned I do not have any numbers, and it did have a lot of constraints, but now these are removed.



Friday's visitors were mainly older generation, but everybody was glad to be there. Saturday was very busy, but lots of room to move around.

Sunday was mostly families and **The Quarry** held its own with the kids coming back to us a few times to have another look.

All in all, it was worth the time and effort to attend.

More details of the exhibition can be found at:

<https://modelrail-scotland.co.uk/exhibition/>

RH

## ACCESSORISE YOUR MODEL

We're always looking for suppliers we haven't tried yet so, here's a few more from Ken J to help **you** in your model railway accessories' searches.

PS

Here are the links for some vehicles on my Jones of Taunton layout - all are 3D printed:

The Mark 1 Landrover, the MG T series and the Mark 1 transit all come ready painted from

<https://replitek.co.uk/#page-top>

The range rover, modern van from:

<https://rayrimesdesigns.com/>

some of his models come ready painted. He does a lot of lorries and airport vehicles, but is expanding his bus range.

The buildings, scaffolding and other bits and pieces from:

<https://www.3d-pluss.net/>

The Costa Coffee, scaffolding, fencing, portacabins and the McDonald's drive thru are kits from 3D - Pluss

<https://www.3d-pluss.net/>.

The service ramp is by Shedring Hobbies

<https://shedringhobbies.co.uk/>

The 3D pillbox is by

[www.ngaugemodels.com](http://www.ngaugemodels.com)

The gate keeper's cottage, and other industrial units are from Gaugemaster being former Kestrel kits - another industrial unit is a Metcalfe kit.

Some trees are from Steve Bird at The Model Tree Shop <https://www.themodeltreeshop.co.uk/>

The white transit, MG T series, series I Landrover and mini are from Replitek

<https://replitek.co.uk/#page-top> – some other vehicles are from Ray Rimes

The sunflowers are by Tasma Products supplied via Hattons

<https://www.hattons.co.uk/stocklist/siteresults?searchfield=tasma>

The level crossings are by PECO.

KJ

*Other Coffee & Burgers are available at different locations - trees are everywhere Ed*





---

## EXHIBITION DATES

Here's the latest update:

Dates taken directly from emails to the editor, for which I thank you all *Ed*.

### *From Rodney Hodge*

“Christine and I are at time of editing at:

**Model Rail Scotland Feb 2022** and are exhibiting *THE QUARRY* (With *Bill & Ben*).

We have another later on in the year but not yet confirmed.”

### *From Ken Jones*

Sat 5th March Wombourne *Jones of Taunton*

Fri / Sat 22nd / 23rd April Sutton Coldfield *Waterfall Junction / Kenstadt*

Sat / Sun 7th / 8th May Syston MRC show *Le Club 143* - **NEW LOCATION** - Barkby Thorpe

Sat / Sun 21st / 22nd May Lutterworth *Le Club 143* and *Seen Better Days*

Sat / Sun 10th / 11th Sept TINGS *Seen Better Days*

Sat Oct 1st Telford *Jones of Taunton*

Sat 15th October Wombourne *Le Club 143*

Sat 29th October Birmingham *Jones of Taunton*

### *Philip Hunt - with Greenwood Railway*

Wombourne 5th March 2022

Severn Valley Railway 7th and 8th May 2022

*And Potentially*

Birmingham Show October (took details after Cradley Heath)

Shoeburyness November -?; Was invited down but Covid stopped last two years so might be on the calendar for next year TBC

### *Tony & Jane*

In March 2022 attending Wombourne with *Arley* station.

October 29th 2022 Birmingham exhibition at Castle Bromwich with *Arley* Station.

### *Nigel Harrold*

Up to now I have *Tipton Sub-Division PA* booked for the 6 shows I've listed below:

April 23rd & 24th - Americana Open Weekend at Mech Models, Needwood, B.O.T

May 7th & 8th - Severn Valley Railway Open weekend.

August 20th - Craven Arms M.R.C at Ludlow Racecourse.

October 8th - Cradley Heath.

November 27th & 28th - Warley Show.

**Keep an eye out for 2023**

## OTHER SCALES

A New Page dedicated to guest-scaled articles:

*Thank You to Francis Bamber for this 1:87 article - Ed*

Here is a picture for your March Newsletter.

First off are all VW's 1/87 scale as is everything else to come and are all made by Busch.

### **Starting left to right front row,**

Beetle with old bumpers and 6v electrics.

Beetle US market bumpers, 6v electrics.

Beetle bigger US market bumpers 12v electrics, which run till the end of the air-cooled era world wide.

Type 181 rebirth of a ww11 model sold as the Trekker.

Hebmuller uses the VW chassis for their idea of a car, different but I think they lasted about four years.

VW 1600 Karmann Ghia, the colours of this model is the same as the first one I ever saw.

### **Back row L to R**

(all are VW T1b made by Brekina who I think make the best models)

Camper van raised roof.

Samba bus.

O&K Service van - Old loco makers and last known, by me, to make escalators.

Wide bodied pick-up - Never saw any all the time on the continent.

Double Cab with canopy - Saw plenty of these, everybody used them.

High roof van - This model "Erwin Klocke" car parts and tyres.



*Thank you Francis for this image of a wonderful collection. I promise you will see more in future issues of this Newsletter Ed*

Previous COMPETITION answer

Nobody emailed me - shock.....horror.....



Did I make this too obscure? Did none of you go to Cradeley Heath in October 2019, yes it was that long ago! Have you all lost interest? Was it too easy? Let me know please.

Perhaps the owner of this wonderful layout doesn't read our newsletter, mmm, I'll have to get on to our distribution department.



See the next page for this Issue's competition.

Here's a WORD PUZZLE for you to pass those days between Club Meetings!

How many words of 4 or more letters can you make out of:

“WHARTSON HALL” ?

SO, PRINT OFF THIS PAGE and use the area below for your answers:

Joke of the day

I miss the old days of railway when the driver had plenty of esteem.

unknown AUTHOR (I know - it gets worse)

# COMPETITION PAGES

Here we go again, boys and girls, WORD-SEARCH No.25/1/1

Print off this page, then find the words listed below, in the puzzle - good luck and enjoy your Royal celebrations before the next Newsletter.

- BUCKINGHAM
- CELEBRATION
- DERBY
- ELIZABETH
- EPSOM
- HOLIDAY
- JUBILEE
- PAGEANT
- PALACE
- PLATINUM
- PUDDING
- QUEEN
- ROYAL
- TROOPING
- WINDSOR

J Z G Q M Q F H L S F D Q L W I B U G D  
 J W B X U B B U M A H G N I K C U B E L  
 F T U T P N Z S E S Z J B E R H S R N L  
 E U R I R X P G S S I Y C H O K B T C Q  
 X P A G E A N T U H K O X S G Y I R S M  
 R W W C C M H J N A U L V B U I Z O J F  
 A P A L A C E E P A R B C A U V R O E W  
 L H A X J M E N X Z W S I O M E O P N B  
 O Q O L H U S Y O H X M S U J L S I M D  
 D T Z L Q Y U N W I T X C V R H D N G I  
 E J H M I S V Q Y R T E L B B U N G D X  
 F P U X G D U S U L P A B R H V I M D B  
 Y U H B T S A C P R Y Q R A T E W O L I  
 S D I B I W I Y S O E R X B Z K J S B N  
 T D V X L L W G R K F T N J E I U P H B  
 N I J Q S K E J R Q Y I X W A L L E G D  
 I N M X K A V E H K L S J A U J E E Q A  
 F G P U Y W Y H N B W L Q A K J Q C K L  
 K Z L X F X B V V Y I E X F F N B J S Y  
 P T X G G O X S E P M U N I T A L P X L



*This Issue's Competition is:*

Where on earth was this **Schools Class Loco** in 1959, and why ?

## SUPPLIERS

# OXFORD



<https://www.oxforddiecast.co.uk/collections/1-148>

Product	Description	Release	Updated Release
<b>1:148 Oxford Agriculture</b>			
NFBB001	15145 Rusty Fowler BB1 Ploughing Engine	Q3/2022	Q4/2022
NFBB002	Fowler BB1 Ploughing Engine No15222 Bristol Rover + Living Wagon	Q3/2022	Q3/2022
NLW002	Living Wagon Pickfords	Q3/2022	Q4/2022
<b>1:148 Oxford Automobile</b>			
NCOR3005	Ford Cortina MkIII Electric Monza Blue	Q2/2022	Q3/2022
NJAG8003	Jaguar MkVIII Indigo Blue/Cotswold Blue	Q1/2022	Q3/2022
NJAG9004	Jaguar Mk8/9 Black/Imperial Maroon	Q2/2022	Q3/2022
NMN009	Classic Mini Tweed Grey/OEW	Q1/2022	Q3/2022
NVWS001	VW T1 Samba Bus Sealing Wax Red/Beige Grey	Q3/2022	Q4/2022
<b>1:148 Oxford Commercials</b>			
NFTC001	Ford Transit Connect Royal Mail	Q3/2022	Q4/2022

# ONLINE REPORT

With the club's reopening let's continue to spread the word and keep our fantastic hobby on the move.....

Social Media: STAR FACEBOOK PAGE

Just type in **West Midlands N Gauge Club**

*(Our very own Facebook page - get on it, get friending, come on let's make this the viable partner to our fantastic Newsletter)*

## EXTRACT FROM AN ACTUAL PAGE IN FEBRUARY 2022

The image shows a screenshot of a Facebook post. On the left is the comment section with the following text:

- You and Jane Minchin** (posted 4 weeks ago)
- Seen by 7 people
- All comments
- Jeremy Edwards**: A pair of Kens (4 weeks ago)
- Jane Minchin**: Wonder if any other club has a pair like these. (4 weeks ago)
- Anthony Butler**: The Ken sisters 😊 (4 weeks ago)
- Anthony Butler**: Are they always found nose to nose? Like class 20's? 😊 (4 weeks ago)

On the right is a photograph of a model railway display. Several people are gathered around a table covered with a green mat, looking at a model train layout. A sign above the display reads "WATERSTOCK".

This will also be of special interest to local members - click below for a great article from Ken J. <http://www.britishtramsonline.co.uk/news/?p=43816>

**British Trams Online**  
The complete UK tram & light rail scene

And a little further away:  
<https://ngsiow.uk/?s=N+gauge>  
 Which links to their fantastic website including their members' layouts and more....

The screenshot shows the N Gauge Society website with search results for "N Gauge". It features a "Model Rail Magazine - 2021 Awards" article and a "KATO" logo.

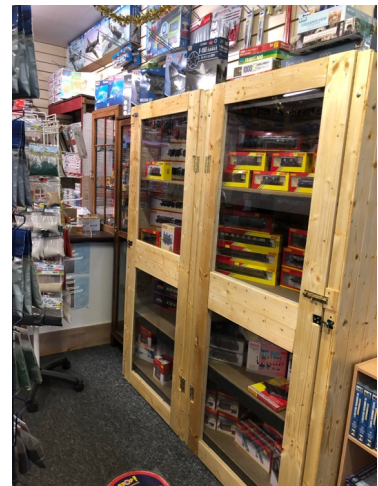
## MODEL SHOPS

Come and see Ritchie in his well stocked shop in Bloxwich  
Yes there's loads of N Scale, as well as tools, glues and paints.

<https://www.scalemates.com/shops/shop.php?id=2941>

go on! click the link above for **address details and opening hours**, it's a really friendly shop and COVID aware, all current precautionary advice, and more, is being adhered to - you can mention Vince's name on entry and you'll be welcomed heartily

*(must remember to copy newsletter to Ritchie - note to self Ed).*



## RETURN JOURNEY

Otherwise known as any other business & raisins to be cheerful 1,2,3.....

1. It is our Club's 27th year, and we're open in renewed premises.
2. Our WORD SEARCH has gone Royal.
3. I have embraced computers, and modern tech generally, since it all started. I have been fortunate enough to have understood its development - most people just make use of it - you don't have to know how a screwdriver is made to be able to put a shelf up - well that's another story! Just to put the record straight, generally, about smartphone cameras - the wider the camera lens diameter, the more light it can capture and, together with the 'qualities' of the available light, and the stopped-down aperture, will allow more or less of the image to be in focus - old school.



Modern 'smart' phones have very tiny lens, and can only produce selectively in-focus images by extrapolation, or by the use of a number of slightly offset lens - and the computer brain makes up any 'missing' or inaccurate pixels (image formation by mathematics, or algorithms). Don't get me wrong, you can get extremely good images on smart devices, but, personally, you can't beat the old 'style' of Single Lens Reflex camera, even if they are Digital sensor driven (like Pentax, Canon or Nikon) - and who doesn't like the look and feel of a chunk of metal in the hands of an amateur photographer, especially if its held firmly on a tripod - and as for darkrooms - nuff said.

I really do like raisins and by the way, to my predecessor, that's a much better look Ed

## EDITORIAL IDEAS BOX

If all else fails, we still have our friendly, little Club - dedicated to all things N' Scale, but **mostly** trains and railway related stuff - not forgetting the cakes of course!

Just a reminder that **anytime is the right time** if you have *any* modelling related memories, images or anecdotes you would like to **share with everyone**, then email me at: [art1san1957@icloud.com](mailto:art1san1957@icloud.com)

Please note that any recommended suppliers, ideas or suggestions found in this not-for-profit, and totally free newsletter, are for readers' personal use only, any inaccuracies are regretted and not deemed to be life-threatening.

### CREDITS

All images in this issue are submitted, in the main, by the author of each article, any copying, scanning or pasting etc, etc, blah, blah, are at your own risk - GDPR apply.

Special Thanks to the following Club Members for their articles:  
Everyone on our Facebook pages and  
Jeremy Edwards, Nigel Harrold, R&C Hodge & the two Kens.



Edited Using Pages app  
on Apple iPad Pro 2019 running iOS for iPad v15.3.1  
(other devices, apps & operating systems are available - apparently)Ed







## NOTICEBOARD INFORMATION

Meetings will be as follows, and are to be held at:

Tipton Green Methodist Church Hall  
Park Lane West  
TIPTON  
West Midlands  
DY4 8LD

### WMNGC MEETING DATES 2022

Saturday 8<sup>th</sup> and 22<sup>nd</sup> January (new dates due to 1<sup>st</sup> Jan being a Sat)

Saturday 5<sup>th</sup> and 19<sup>th</sup> February

Saturday 5<sup>th</sup> and 19<sup>th</sup> March

Saturday 2<sup>nd</sup> and 16<sup>th</sup> April

Saturday 7<sup>th</sup> and 21<sup>st</sup> May

Saturday 4<sup>th</sup> and 18<sup>th</sup> June

Saturday 2<sup>nd</sup> and 16<sup>th</sup> July

Saturday 6<sup>th</sup> and 20<sup>th</sup> August

Saturday 3<sup>rd</sup> and 17<sup>th</sup> September

Saturday 1<sup>st</sup> and 15<sup>th</sup> October

Saturday 5<sup>th</sup> and 19<sup>th</sup> November

Saturday 3<sup>rd</sup> December (including AGM)

*For more N' Scale information and a host of other interesting topics*

Visit our Club Website <http://www.wmngaugeclub.co.uk/>

Facebook search [West Midlands N Gauge Club](#)

**BE HAPPY AND KIND TO OTHERS**

**Meetings will be held following central government and local guidelines, in consultation with our hosts.  
Any changes will appear in our Newsletters, with emails/post & calls for urgent info.**